



JUMPOVER HOSES

JUMPOVER HOSE is the common name for the connector that transfers heating medium from one section of jacketed piping to another or from one ControTrace[®] element or panel to another. CSI flexible metal JUMPOVER HOSE provides a speedy installation alternative to hard piping and stainless steel tubing jumpovers. Many plants and refineries use CSI flexible jumpovers to transfer steam, hot water, and hot oil.

WHY CSI JUMPOVER HOSE

Eliminate thermal stresses which could result from hard-pipe jumpers. CSI jumpover hose allows jacketing to expand during start-up when thermal expansion is most significant.

Simplified installation, especially in congested areas. No field welding required. Insulation is already installed.

ASME fabrication with CRN & Sound Engineering Practice (SEP) per 2014/68/EU PED by ASME Section IX certified welders.

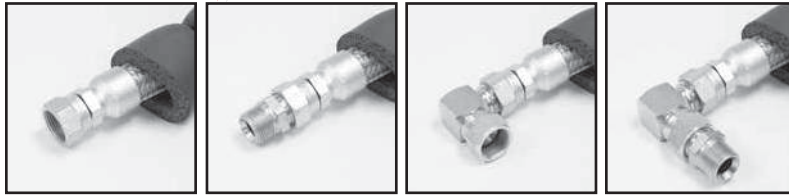


1/2", 3/4" or 1" nominal core size, 24 - 72" standard lengths.

- **Stainless Steel Core** - 321 stainless steel core covered by a type 304 stainless steel braid with standard CS fittings. (SS fitting option available.)
- **No Welding** - simplified installation.
- **Eliminate Leaks** - proprietary JIC+ male fittings eliminate the need for gaskets and reduces installation torque to seal.
- **Reduced Cost** - shop fabricated assemblies with pre-installed insulation.
- **Choice of Connections** - choose JIC, flanged or tube stubs.



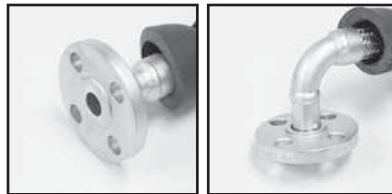
JUMPOVER HOSES



N **A** **J90** **J90A**

JIC Connections - unlimited make/break

- N** - JIC female
- A** - JIC female with JIC+ MNPT straight adapter
- J90** - JIC female 90° connection
- J90A** - JIC female 90° connection with JIC+ MNPT adapter



FLGSE
FLGWN **FLGSE90**
FLGWN90

FLANGE Connections - unlimited make/break

- FLGSE** - rotating flange straight connection
- FLGWE** - non-rotating flange straight connection
- FLGSE90** - rotating flange 90° connection
- FLGWE90** - non-rotating flange 90° connection

Connection size corresponds to core size.



PE

TUBE STUB Connections - limited make/break

- PE** - straight tube stub connection
- PE90** - 90° tube stub connection

Working Pressure (PSIG)

Steam PSIG	Temp °F	JIC Connector			150# Flange Connector			Tube Stub Connector		
		1/2"	3/4"	1"	1/2"	3/4"	1"	1/2"	3/4"	1"
50	298	938	563	450	231	231	231	938	625	400
100	338	918	551	441	219	219	219	918	612	392
150	366	906	543	435	211	211	211	906	604	386
200	388	893	536	429	204	204	204	893	595	381
250	406	883	530	424	198	198	198	883	589	376

Part Number

CORE SIZE 07	END ONE J90	END TWO J90	INSULATION 002	LENGTH 24	MEDIA S
------------------------	-----------------------	-----------------------	--------------------------	---------------------	-------------------

- 05** = 1/2"
- 07** = 3/4"
- 09** = 1"

- N** = JIC female
- A** = JIC+ male straight connection
- J90** = JIC female 90° connection
- J90A** = JIC female 90° connection, with JIC+ MNPT adapter
- FLGSE** = rotating flange straight connection
- FLGWE** = non-rotating flange straight connection
- FLGSE90** = rotating flange 90° connection
- FLGWE90** = non-rotating flange 90° connection
- PE** = straight tube stub connection
- PE90** = 90° tube stub connection

- 002** = Black Silicone 425°F (218°C)
- CC** = ControCover (per application)

- 24** = 24"
- 30** = 30"
- 36** = 36"
- 42** = 42"
- 48** = 48"
- 54** = 54"
- 60** = 60"
- 72** = 72"

- S** = Steam and Hot Water
- R** = Hot Oil
- OTH** = Other, must provide details

Example: 3/4" nominal core with 3/4" 90° JIC CS connectors at each end, standard silicone insulation, 24" long for steam.
Order part number **07-J90-J90-002-24**.

Other materials, sizes, lengths and construction are available.
Send request with custom specifications to: rfq.csi@ametek.com.
Specifications subject to change without notice.