

Manifold Optimization System (MOS)

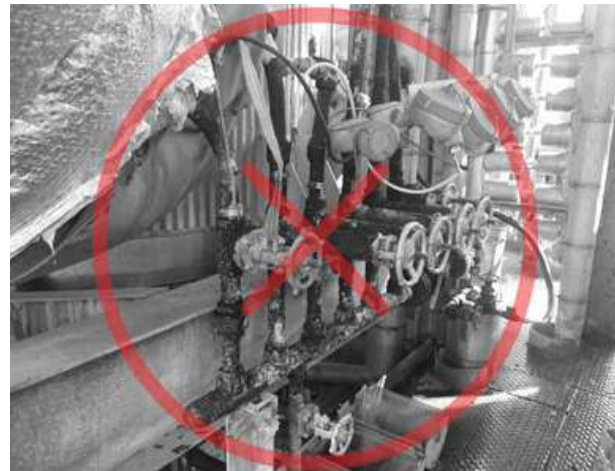
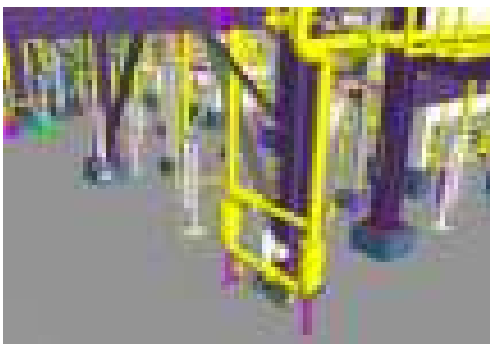
"Less is MOS"

Historically, placement decisions for heating system infrastructure have been governed by inefficient plant specs and other non-engineered methods. These methods often require field engineering and decisions that lead to both increased infrastructure and ongoing maintenance costs required to maintain the equipment.

With development of the **Manifold Optimization System (MOS)** program offering, CSI has revolutionized a way to optimize the infrastructure associated with any jacketed or trace heating system.

Benefits

- **Fully Optimized Manifold Placement:** All circuit routings evaluated to determine minimum quantity of manifolds required.
- **Performance Based on Engineering:** Circuit lengths maximized based on pressure drop analysis.
- **Reduced Installation and Labor Costs:** Fewer manifolds and more strategically placed manifolds reduce overall installation & labor costs.
- **Operations Efficiency:** Less infrastructure equals lower cost throughout the life of the plant.

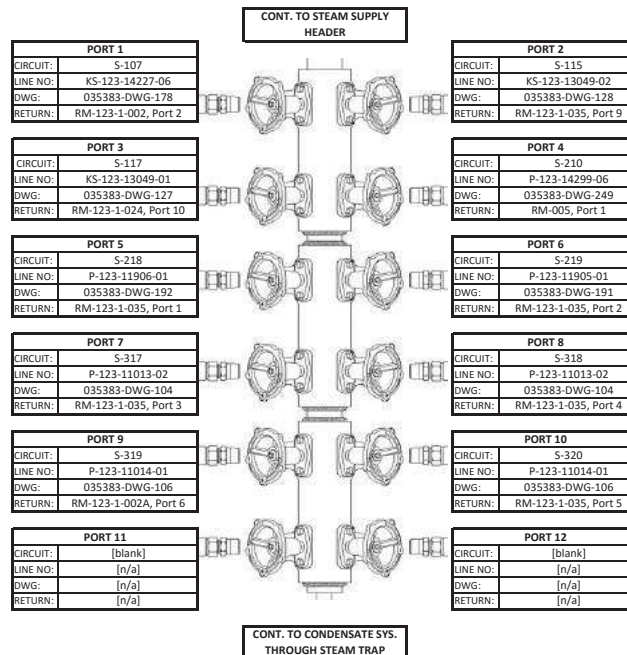


Forgotten Plant Infrastructure: The lines shown above tie into one steam trap, which results in condensate back-up and poor tracing performance.

MANIFOLD DATA SHEET

CLIENT:	Engineering Company Name	REV:	0
END USER:	Refinery Name	CHK:	ACB
LOCATION:	Somewhere	ENG:	BNG
PROJECT:	project	DATE:	23-Jun-16
CSI SO #	35383	CLIENT PO #	-

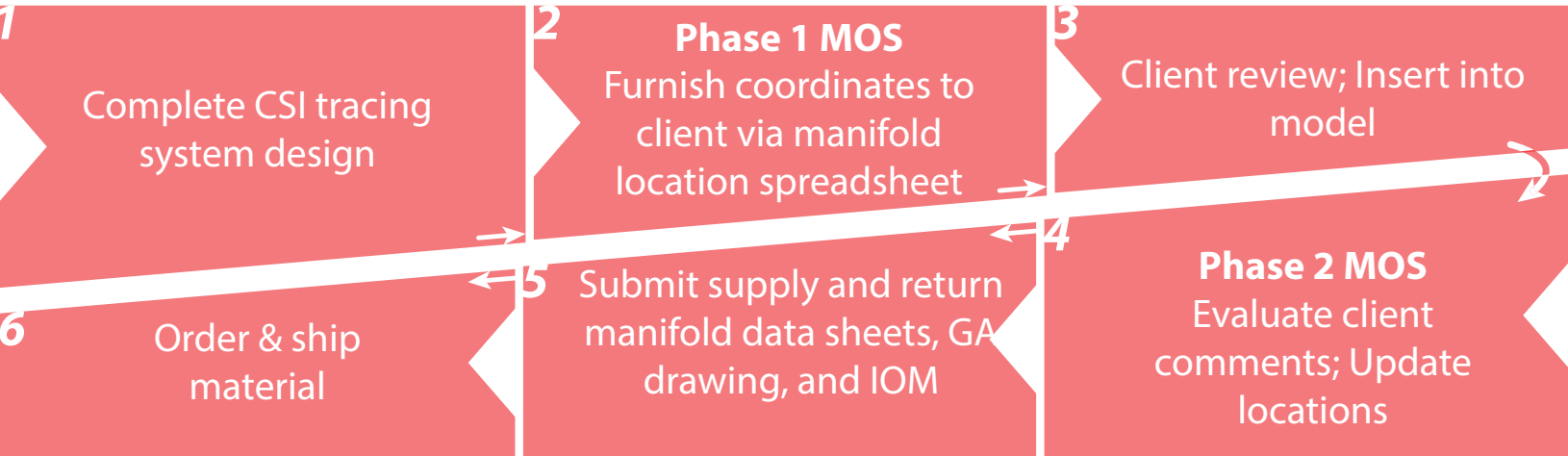
MANIFOLD:	DM-123-1-011	TYPE:	Supply, 12-Port
UNIT:	U123	STEAM PRESSURE:	3.5 barg
EASTING:	10342601 mm	NORTHING:	1278404 mm
ELEVATION:	27430 mm		



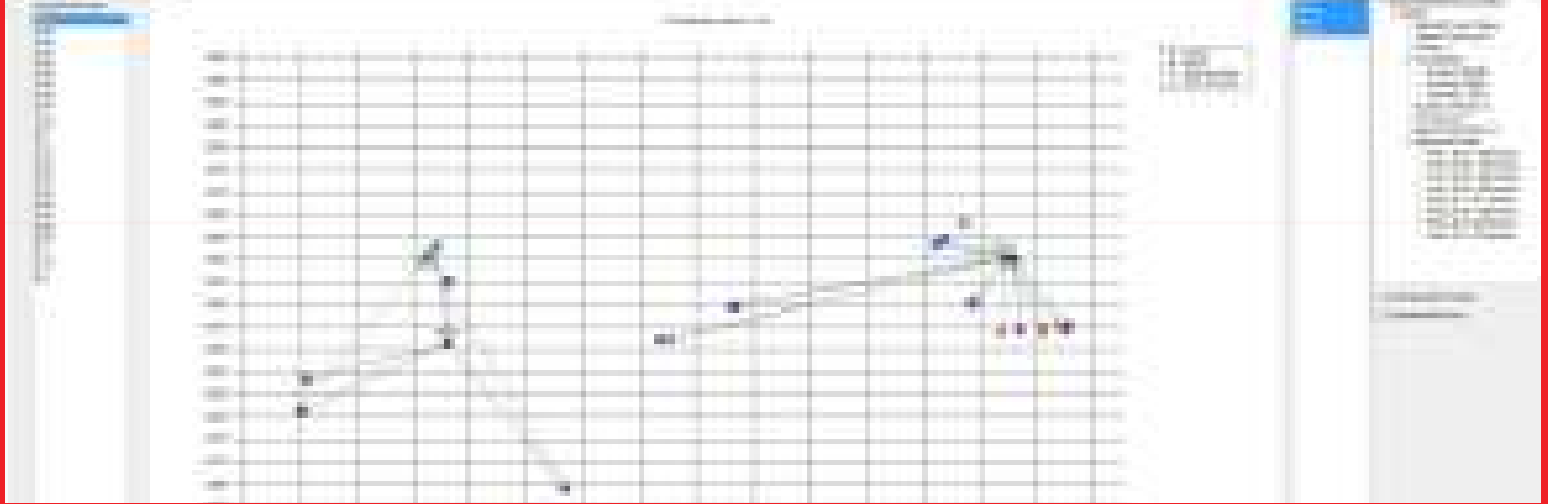
CSI MOS Deliverable: Each manifold has specific location and circuit ID.

Manifold Optimization System (MOS)

MOS Process



MOS Program Output



Total Plant Solutions

From choosing the right heating system to designing the supporting infrastructure, CSI can optimize your plant to deliver a TOTAL PLANT SOLUTION which uses the appropriate thermal solution while minimizing costs of both the heating system and infrastructure (manifolds/supply-return tubing/steam traps).



Please Send All Quote Requests To:

rfq.CSI@ametek.com